



Douglas, QLD
11 Templeton Crescent

3
BED

1
BATH

2
CAR

LIVE INVEST
REAL ESTATE

**LOOKING FOR THAT BIT OF EXTRA CLASS ?
TROPICAL OASIS AND POOL \$365,000**

Open by Appointment, practicing Safe Distance's.

This hidden treasure will truly appeal to the well established and discerning buyer. This flow through design takes you from the formal lounge to the cool classy kitchen with separate dining area to the TV/Family room (all with garden and pool views) looking across the rear outdoor patio to the huge mineral freeform landscaped pool. The densely packed screen of tropical foliage surrounds the whole environment. The three huge bedrooms share the large bathroom featuring a luxury corner bath. The toilet is separate from the bathroom.

The single lockup garage is complimented by an extra parking area suitable for your caravan/boat etc. Outback on this 720M2 block there is room to move in the beautifully established tropical gardens with two large independent entertaining areas plus an extra barbeque area separate from the other two areas by the pool - and of course there is a shed for the

tools/lawnmower etc.
The theme is lots of light,

SOLD

Contact: Shari Price
0400 282 333

Type: House

Sold Date: 13/05/2020

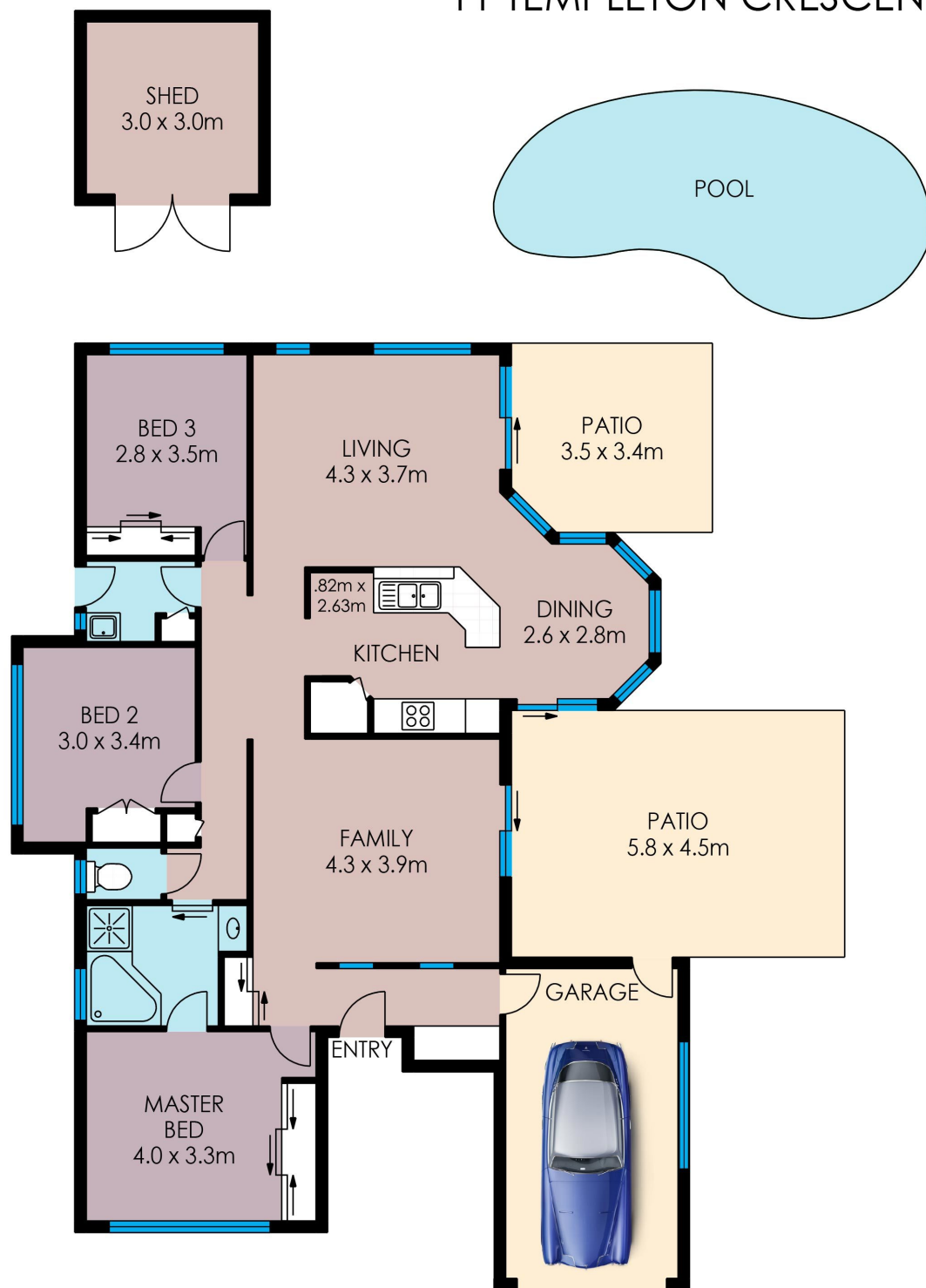
Land: 720m2

<https://www.liveninvest.com.au>

Property Features

Air Conditioning, Balcony/Patio/Terrace, Garden, Garden
Shed, Living Area, Swimming/Lap Pool

11 TEMPLETON CRESCENT



Fratter
photography

INTERNAL: 135SQM
EXTERNAL: 36SQM



Disclaimer: Please note this floor plan is for marketing purposes and is to be used as a guide only. All efforts have been made to ensure its accuracy at time of print.

Plans shown are only indicative of layout. Dimensions are approximate.

Douglas, QLD
11 Templeton Crescent