



## Burdell, QLD

11 Trevalla Entrance

**4**  
BED

**2**  
BATH

**2**  
CAR



### LOW MAINTAINANCE "EASY CARE" MODERN FAMILY HOME. PERFECT FOR THE FIRST HOMEBUYER, DOWN SIZERS OR SAVVY INVESTOR

Located in sought-after North Shore is this modern (built 2013) low maintenance family home offering you vacant possession. North Shore is very family community minded & is popular with home owners looking for a relaxing lifestyle that offers easy access to lovely shaded leafy parklands, schools & shopping.

- Four good size air-conditioned bedrooms- fans- built-in cupboards
- Master bedroom showcases a gorgeous en-suite with double shower heads & walk in robe

Modern kitchen with big island bench space & boasts a massive walk-in pantry with four double power points on offer

Theatre room to chill out & enjoy your favourite movies

### SOLD

**Contact:** Terry Cochrane  
0447 878 031

**Type:** House

**Sold Date:** 25/06/2020

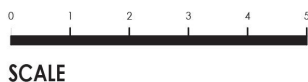
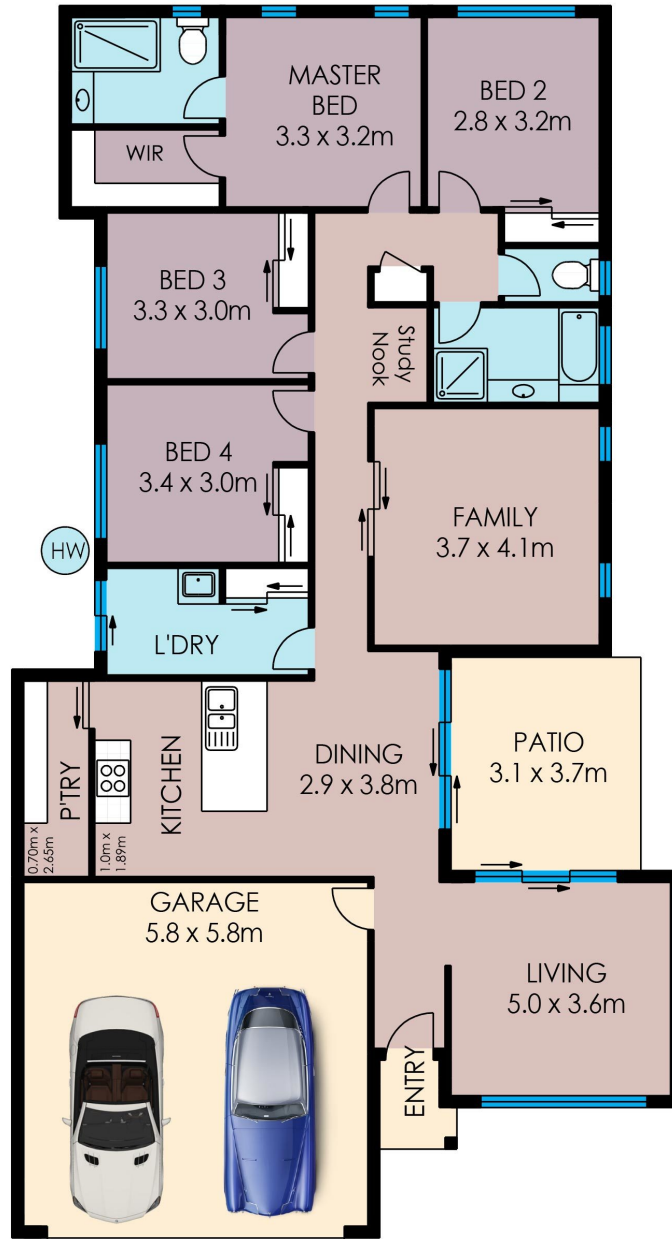
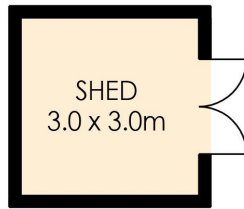
**Land:** 502m2

<https://www.liveninvest.com.au>

### Property Features

Air Conditioning, Balcony/Patio/Terrace, Built-ins, Close to Parklands, Close to Schools, Close to Shops, Entertainment Area, Internal Laundry, Level Lawn, Media Room, Modern Bathroom, Modern Kitchen, Pet Friendly, Quiet Location, Remote Garage, Secure Parking

# 11 TREVALLA ENTRANCE



Fratter  
photography

INTERNAL: 177SQM  
EXTERNAL: 12SQM



Disclaimer: Please note this floor plan is for marketing purposes and is to be used as a guide only. All efforts have been made to ensure its accuracy at time of print.

Plans shown are only indicative of layout. Dimensions are approximate.

**Burdell, QLD**  
11 Trevalla Entrance