



## Bohle Plains, QLD

8 Drysdale Street

**4**  
BED

**2**  
BATH

**2**  
CAR



### WOW! WOW! WOW!

All I can say is click onto the 3D tour and don't miss

From the moment I stepped out of my car I said WOW? This is going to be a nice home and as I walked through this amazing home, I kept saying WOW THIS IS STUNNING.

It only has one neighbour as it is surrounded by parklands. So prepare to be impressed, no expense has been spared in the construction of this magnificent home.

#### FEATURES:

- 4 spacious carpeted bedrooms all with built-in robes and air-conditioning
- King sized master bedroom, with walk-in robe and ensuite. As you can see in the 3D tour the ensuite, will be the envy of all your friends.

### SOLD

**Contact:** Doreen Charity  
0414691666

**Type:** House

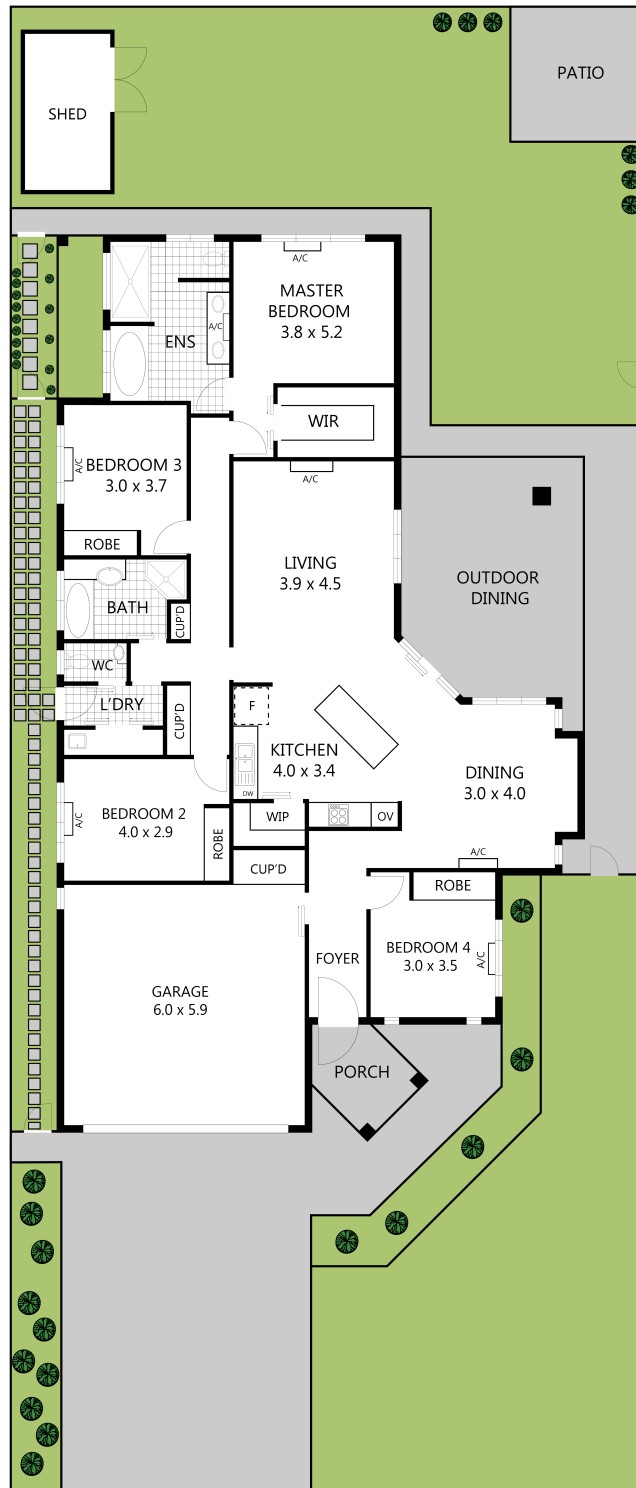
**Sold Date:** 10/05/2021

**Land:** 520m2

<https://www.liveninvest.com.au>


#### Property Features

Air Conditioning, Bath, Built-ins, Close to Parklands, Close to Schools, Close to Shops, Close to Transport, Dishwasher, Dual Shower, Entertainment Area, Fully Fenced, Garden Shed, Living Area, Modern Bathroom, Modern Kitchen, Quiet Location, Security Windows, Shed, Storage Area, Views



0 1 2 3 4 5

Scale in metres. Indicative only. Dimensions are approximate. All information contained herein is gathered from sources we believe to be reliable. However we cannot guarantee its accuracy and interested parties should rely on their own enquiries.

TOTAL AREA - 194m<sup>2</sup> 

## 8 Drysdale Street, Bohle Plains 4817

Plans shown are only indicative of layout. Dimensions are approximate.

**Bohle Plains, QLD**  
8 Drysdale Street