

Indication only. Dimensions are approximate. All information contained herein is gathered from sources we believe to be reliable. However, we cannot guarantee its accuracy and interested persons should rely on their own enquiries.



Deeragun, QLD

46 Brenton Circuit

4 BED
2 BATH
2 CAR



Perfect starter for a small budget!

With the Townsville property market on the rise, NOW is the time to invest in your future.

Positioned in one of Deeragun's sought-after Brenton Park Estate, is this 4-bedroom home. It is perfect for the large family or keen investor!

Fantastically maintained this low-set home. It is an excellent opportunity for investment or to get into the housing market for the first time.

Situated on a 780m2 block, this property has recently been fully painted inside and out.

2 living areas. Open plan family/dining. The kitchen offers ample cupboard space.

SOLD

Contact: Doreen Charity
0414691666

Type: House

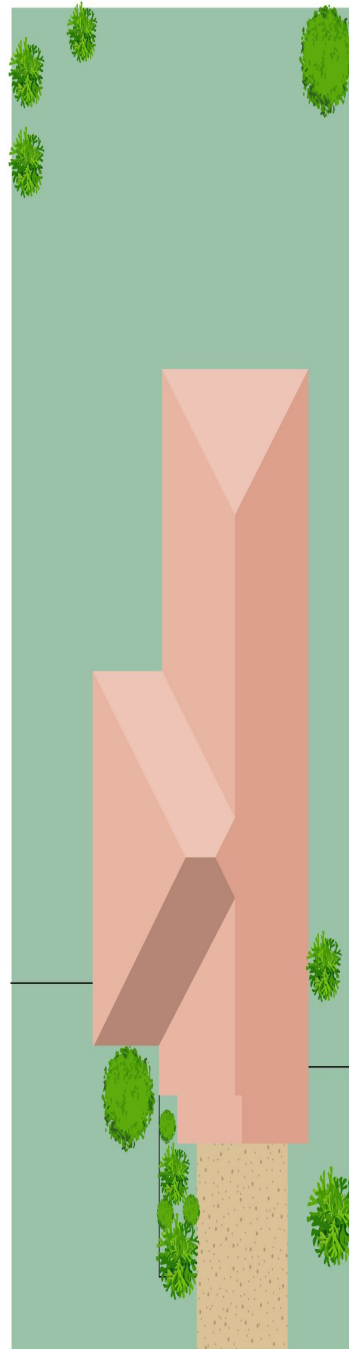
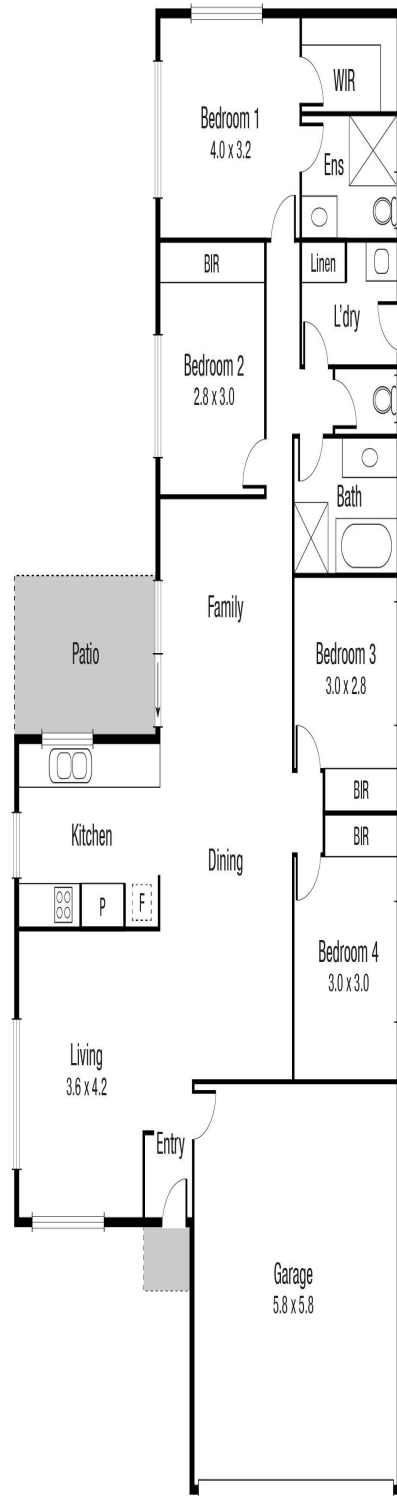
Sold Date: 02/12/2022

Land: 780m2

<https://www.liveninvest.com.au>

Property Features

Air Conditioning, Bath, Broadband, Built-ins, Close to Parklands, Close to Schools, Close to Shops, Fully Fenced, Internal Laundry, Modern Bathroom, Modern Kitchen, Pay TV Enabled, Pet Friendly, Secure Parking, Security Windows, Walk In Robe



Scale in metres. Indicative only. Dimensions are approximate. All information contained herein is gathered from sources we believe to be reliable. However we cannot guarantee its accuracy and interested persons should rely on their own enquiries.

TOTAL AREA : 180 sq.m

46 BRENTON

Plans shown are only indicative of layout. Dimensions are approximate.

Deeragun, QLD
46 Brenton Circuit